



# English

**IPPEEL:** Letter/ Travel guide to Newmarket

# Amethyst Summer 2 'Under Starter's Orders'

## Topic Web 2023-24

### Christian Value – Justice



# Maths

Shape  
Position and direction

# History & Geography

**Science**  
Animals including humans (growth and reproduction)

**Geography:**  
Identify counties and regions in the UK and geographical features and land use patterns of the Newmarket

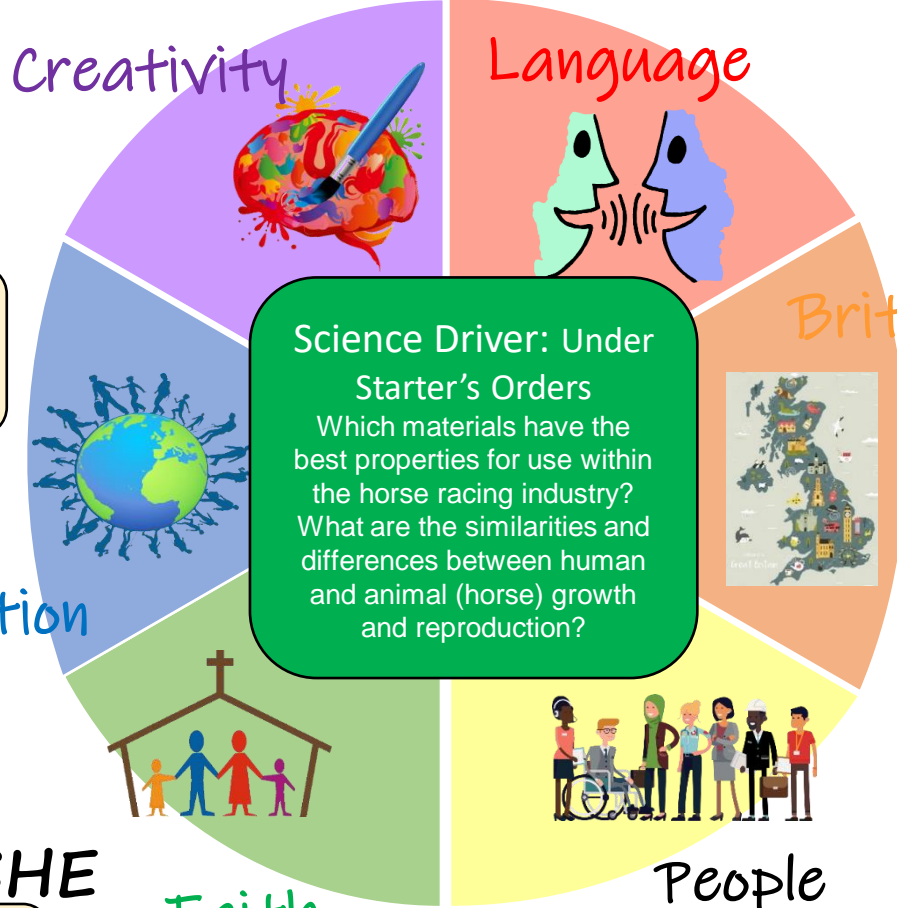
**History:** Local Study- The Stuarts

# Computing

Selection in quizzes

# PSHE/RSHE

Relationships and SRE



**Science Driver: Under Starter's Orders**  
Which materials have the best properties for use within the horse racing industry?  
What are the similarities and differences between human and animal (horse) growth and reproduction?

# BRAVE

**HUMANISM**  
Why do Humanist say happiness is the goal of life?

# P.E

Swimming and Athletics

# ART & DT

Art: Painting- Chris Ofili and Fauvist paintings  
DT: Bridges- structures, gears and pulleys

# Music

Charanga: Reflect, Rewind, Replay

# MFL

French: Je suis super-heroes/ super heroine