



Amethyst Class – Year 5 Autumn 1 Topic Web



English

IPEELL: Instructions
Biography
Take One Book: William Shakespeare by Mick Manning and Brita

Science

Earth and Space- *What were the different scientific theories on space around the Tudor era?*

History & Geography

History: Tudor- A theme in British history that extends pupils' chronology past 1066

Computing

Sharing Information

PSHE/RSHE

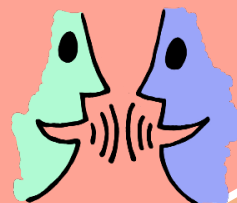
Health and well-being

Christian Value - Peace

Creativity



Language



Britain



Terrible Tudors
How has the Tudor legacy influenced and shaped Britain and the wider world?

Migration



Faith



People

MFL

French: Mes activités de loisir

Maths

Place value
Addition & subtraction

BRAVE

Beliefs and Questions
CHRISTIANITY
How do Christians show their belief that Jesus is God incarnate?

P.E

Swimming
Dance

ART & DT

DT: Textiles (Tudor purses) Food technology (Tudor knots)
Art: Printing

Music

Charanga: Livin' On A Prayer



Amethyst Class – Year 5 Autumn 2 Topic Web



English

IPEELL: Biographies-
Shakespeare.
Christmas narrative: Short!
Christmas stories

Christian Value – Responsibility

Maths

Multiplication & division
Fractions

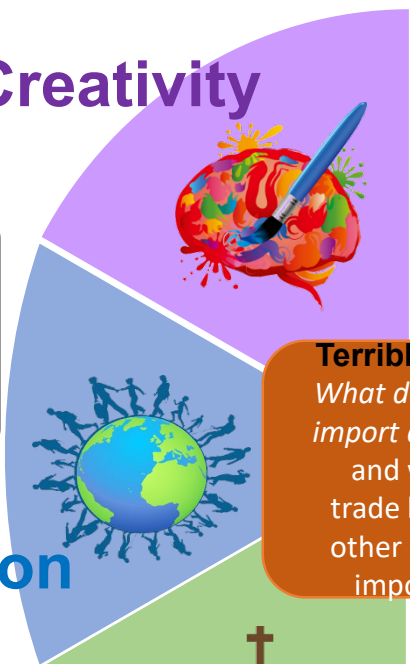
Science

Living things and their habitats- *How do life cycles of mammals, amphibians, insects and birds differ? How do plants reproduce?*

History & Geography

Human and Physical Geography:
Human geography: economic activity and trade links

Creativity



Language

Britain

Terrible Tudors
What does the UK import and export and why are trade links with other countries important?

P.E

Swimming
Hockey

BRAVE

Beliefs and Questions
ISLAM
How does tawhid create a sense of belonging to the Muslim community?

Migration

Faith



People

ART & DT

Art: Textiles

Computing

Vector drawings

PSHE/RSHE

Health and well-being

MFL

French: Mes activités de loisir

Music

Charanga:
Classroom jazz